

A note on *Cheiracanthium pennyi*
O.P.-Cambridge

D.J.Clark

formerly of
British Museum (Nat.Hist.)
and

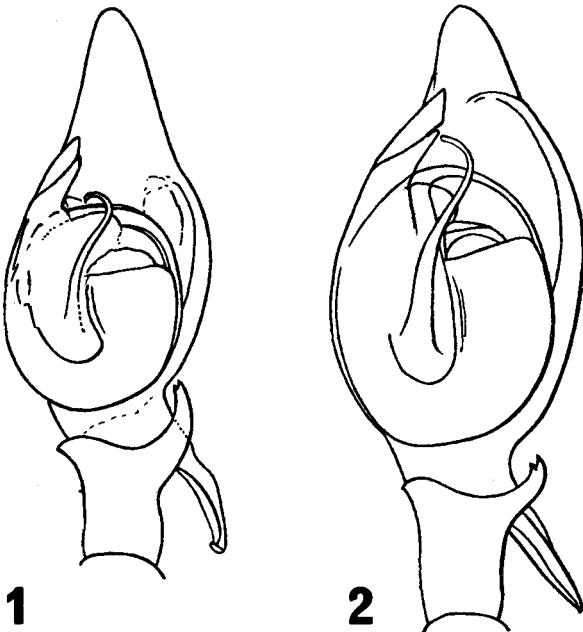
P.C.Jerrard

16 Woodlands Road, Stoke,
Guildford, Surrey

On 5 July 1970, the authors spent a day collecting spiders on heathland just north of Guildford, Surrey.

The area examined was covered with Ling (*Calluna*). Small groups of an *Erica* species were scattered amongst the Ling, as were a few very young birch seedlings. The heather was old and undisturbed.

Two silk cocoons were collected from near the top of *Calluna*, one contained a male and female *Cheiracanthium* and the other, a female. These were later



Figs. 1-2: 1 *Cheiracanthium pennyi*: male palp, ventral view
2 *C. erraticum*: male palp, ventral view

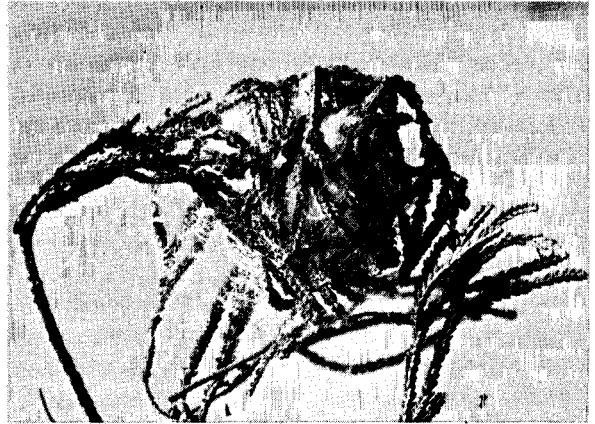


Fig. 3: Nest cocoon of *Cheiracanthium pennyi* on *Calluna*

identified as *C.pennyi* by D.J.C., whose drawings of the male palp of this specimen and of *C.erraticum* (Walck.) are figured here (Figs. 1 & 2).

Another visit to the same area, on 9 August, yielded six female *C.pennyi* with either eggs or young in thick silk cocoons (Fig. 3), again conspicuously near the top of *Calluna*.

Descriptions of the female and male from very old and bleached specimens (Locket & Millidge, 1951) have been supplemented by the discovery of new female material in recent years (Clark & Locket, 1964).

Thanks are due to Mr A.Smith for retouching the drawings for publication and to Mr K.H.Hyatt for the photograph. Specimens are deposited in the British Museum (Nat.Hist.).

References

- CLARK, D.J. & LOCKET, G.H. 1964 : *Cheiracanthium pennyi* O.P.-Cambr. *Bull.Br.Spider Study Gr.* No.22, pp 1-2
LOCKET, G.H. & MILLIDGE, A.F. 1951 : *British Spiders* Vol.1, pp 145-6, Ray Soc. London.