

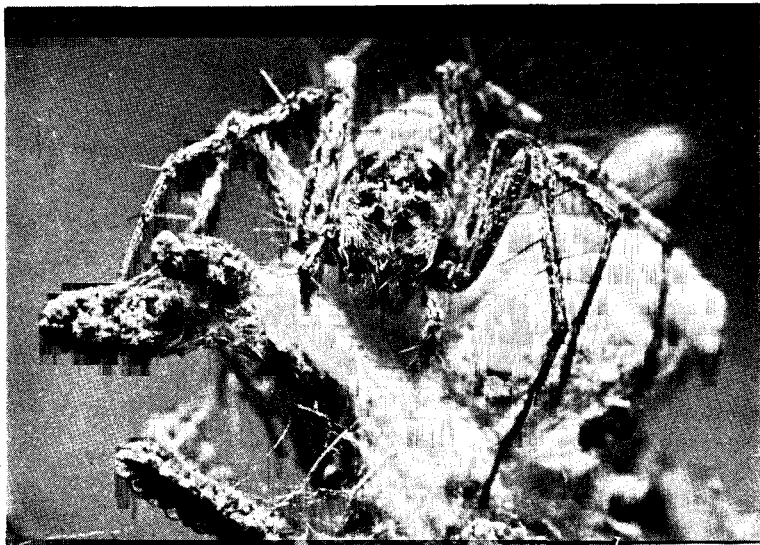
- MERRETT, P. 1967: The Phenology of spiders on heathland in Dorset 1. Families Atypidae, Dysderidae, Gnaphosidae, Clubionidae, Thomisidae and Salticidae. *J.anim.Ecol.* **36**: 363-374
- MURPHY, P. (Ed.) 1962: *Progress in Soil Zoology*, Butterworth, London
- PEAKE, J.F. 1958: *Clubiona similis* L.Koch. A spider new to Britain. *Trans.Nor.Norw.Nat.Soc.* **18**: 32-33

- SATCHELL, J.E. & SOUTHWOOD T.R.E. 1963: The Heteroptera of some Woodlands in the English Lake District. *Trans.Soc.Brit.Ent.* **15**: 117-134
- SOUTHWOOD, T.R.E. 1966: *Ecological Methods*. Methuen, London
- SPALDING, D.A.E. 1967: A useful storage unit for spiders in tubes. *Bull.Brit.Spid.Study Gr.* No. 33

Oxyopes heterophthalmus Latr.

P. C. Jerrard

Two females of the above species were collected by the late Mr.D.J. Clark on a heath near Guildford, Surrey on 9 August 1970. Both were guarding their egg cases on spun-together *Calluna* twigs at the top of the plants.



Figs. 1 - 2. Female *Oxyopes heterophthalmus* Latr. guarding egg cocoon on *Calluna*.

The specimens were brought back to the British Museum (Natural History) where one was photographed by Mr.K.H.Hyatt of the Arachnida Section (Figs. 1 & 2).

The camera used was an Exakta with bellows attachment and electronic flash; film, Ilford Pan F.