

SIMON, E. 1926: *Les Arachnides de France* 6 (2). Paris, Roret.

THALER, K. 1967: Zum Vorkommen von *Troglohyphantes*-Arten in Tirol und dem Trentino. *Ber.naturw.-med. Ver.Innsbruck* 55: 155-173.

TRETZEL, E. 1956: Ein Beitrag zur Systematik und Verbreitung mitteleuropäischer Arten aus der Gattung *Porrhomma* (Araneae, Linyphiidae). *Zool.Anz.* 157: 42-56.

Bull.Brit.Arach.Soc. (1975) 3 (5), 144

A note on the female of *Diplocephalus protuberans* (O.P.-C.)

M. J. Roberts

41 Padeswood Road,
Buckley,
Clwyd CH7 2JL

In November 1974 specimens of *Diplocephalus protuberans* (O.P.-C.) were found in moss alongside a small stream at Ddôl marl pit, Flints. (North Wales Naturalists' Trust reserve, Grid ref. SJ 142 714). *Agyneta ramosa* Jackson is also present in the same spot.

As the epigyne of *D. protuberans* figured by Locket & Millidge (1953, p. 296, fig. 179 G) was possibly drawn from an old and faded specimen (there being little material available at that time), it was felt that a drawing taken from a fresh specimen (Fig. 1) would be helpful. Although this appears

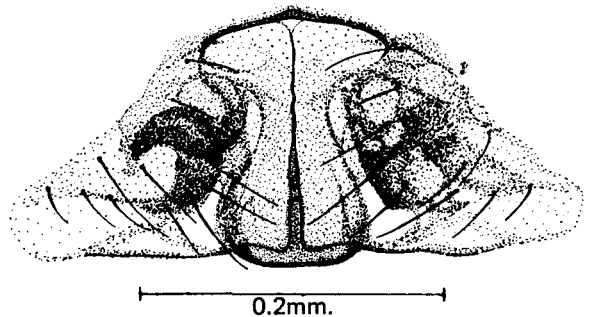


Fig. 1: *Diplocephalus protuberans* (O.P.-C.). Epigyne.

rather similar to the epigyne of *Erigonella hiemalis* (Bl.), consideration of other features (especially the eyes) makes confusion between the two species impossible.

Reference

LOCKET, G. H. and MILLIDGE, A. F. 1953: *British Spiders* 2. London, Ray Society.