

***Pahanga*, a new tetrablemmid spider genus
from Malaysia (Araneae, Tetrablemmidae)**

William A. Shear

Biology Department, Hampden-Sydney College,
Hampden-Sydney, VA 23943, USA*

and

Department of Entomology,
the American Museum of Natural History,
New York, NY 10024, USA

Summary

Pahanga dura, n.gen., n.sp., is described from Pahang, Malaysia, as a member of the family Tetrablemmidae, subfamily Brignoliellinae. The new genus is closest to *Brignoliella* and *Fallablemma*.

Introduction

Subsequent to preparing my recent treatment of the spider family Tetrablemmidae (Shear, 1978), I found among some specimens sent to me for identification a single male of an animal I was not able to place in any presently described tetrablemmid genus. Therefore I am describing it below as *Pahanga dura*, new genus and new species. The new genus is a member of the subfamily Brignoliellinae Shear, as shown by the moderate body size and the characteristic round, seta-bearing punctations on the ventral plates and sternum.

Family TETRABLEMMIDAE O. P.-Cambridge

Subfamily Brignoliellinae Shear

***Pahanga*, new genus**

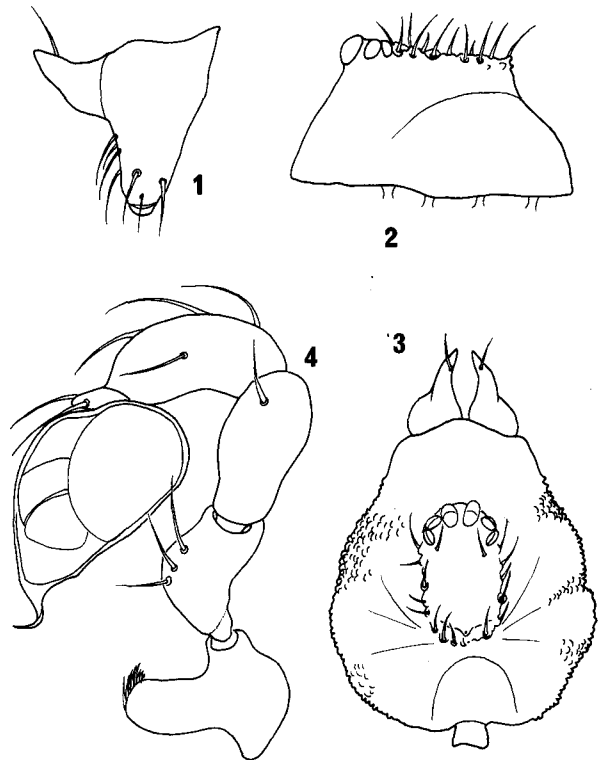
Diagnosis: Distinct from *Brignoliella* in the form of the male palpus, the bulb being pyriform in *Pahanga* and spheroidal in *Brignoliella*; *Fallablemma*, *Singaporemma* and *Ablemma* all lack round punctations on the sternum, though these may occur on the ventral plates of the abdomen.

Etymology: The name of the genus is derived from

the type locality of the type species, and should be considered feminine in gender.

Description: With the characteristics of the subfamily, and in addition: eyes six, all contiguous in a recurved row. Carapace strongly raised to a plateau, the eyes at the anterior margin of this plateau; cuticle of the carapace rough. Male palpus with the tibia, patella and femur nearly subequal in length, bulb pyriform, embolus short, curved, no conductor. Male chelicerae with strong modifications. Ventral plates of abdomen and sternum with characteristic circular punctations, each bearing a seta. Form of female genitalia not known, but probably opening through the posterior margin of the pulmonary plate as in other members of the subfamily.

Distribution: Malaysia.



Figs. 1-4: *Pahanga dura*, male. 1 left chelicera, lateral view; 2 carapace, lateral view; 3 carapace, dorsal view; 4 left palpus, lateral view.

*Correspondence should be sent to this address.

Pahanga dura, new species (Figs. 1-4)

Types: Male holotype from Fraser's Hill, ca 1300 m elevation, Pahang, Malaysia, collected 16 August 1967 by W. L. Brown. Deposited in the Museum of Comparative Zoology, Harvard University, Cambridge, MA 02138, USA.

Erymology: The specific epithet refers to the unusually thick, hard plates of the abdomen and is an adjective.

Male: Total length 1.46 mm. Carapace 0.61 mm long, 0.53 mm wide, oval, dark brown, raised to a height about 40% of its length (Fig. 2), cuticle rough. Raised area flat, delimited by large, rimmed setal sockets (Fig. 3) of the lateral rows, which recurve to form an oval; central seta not observed, but probably broken off as a large socket is present in its usual position. Eyes six, in a recurved row 0.21 mm wide (Fig. 3); median eyes the largest, the lateral eyes about three-quarters their diameter and subequal to each other. No setae or other modifications on the clypeus. Sternum with large, round punctations, each bearing a small seta. Abdomen dark brown, with the usual plates (see Shear, 1978); anterior plate unusually large, extending from anterior to lateral plates to anterior edge of anal plate. Perigenital plates absent; all ventral plates with punctations as in the sternum.

Chelicera with a large anterior apophysis (Fig. 1)

that is unusually broad at the base. Palpus (Fig. 4) with femur arcuate, short, thick; patella about as long and as thick as femur; tibia also nearly the same length and thickness, broadly curved; bulb pyriform, embolus short, curved.

Female: Unknown.

Notes: In the cladogram I recently published (Shear, 1978) *Pahanga* may be placed as the sister-group of *Brignoliella* and *Fallemma* taken together, suggesting that the pyriform palpal bulb in the present genus is an apomorphy. *Pahanga* will come out in my key at *Brignoliella*, but may be distinguished by the characters given in the diagnosis above.

Acknowledgements

I am grateful to Dr H. W. Levi for sending me the collection which contained the type of *Pahanga dura*.

This work was supported by a grant from the Faculty Research Committee of Hampden-Sydney College.

Reference

- SHEAR, W. A. 1978: Taxonomic notes on the armored spiders of the families Tetrablemmidae and Pacullidae. *Am.Mus.Novit.* 2650: 1-46.
-