

**Spiders from Colombia II. A new *Eilica* from the Santa Marta area, northern Colombia (Araneida: Gnaphosidae)**

**Hans-Georg Müller**

Institut für Allgemeine und Spezielle  
Zoologie der Justus-Liebig-Universität,  
Heinrich-Buff-Ring 29,  
D-6300 Gießen,  
Federal Republic of Germany

**Introduction**

During a 13-month period of field work in northern Colombia only one species of *Eilica* was found by the author. The genus is newly recorded from Colombia. The format of the description follows that used in the revision by Platnick (1975).

The research was supported by financial Grants of the German Academic Exchange (DAAD).

***Eilica bonda*, new species (Figs. 1-2)**

**Type:** Male holotype near Bonda, 10 km east of Santa Marta, dept. Magdalena, northern Colombia (leg. H.-G. Müller, October 1985), deposited in Senckenberg-Museum, Frankfurt, Germany (No. 34793).

**Diagnosis:** *Eilica bonda* is closest to *Eilica bicolor* Banks, 1896 (see Platnick, 1975: 12, figs. 20-21), but may be easily distinguished by the much longer tibial apophysis (Fig. 1) and the different shape of the embolar base (Fig. 2).

**Female:** Unknown.

**Male:** Total length (mm) 1.55, carapace 0.74 long, 0.60 wide. Femur II 0.47 long. Carapace brown, lightest medially, abdomen uniformly grey; legs grey, tarsi lightest. Eye sizes and interdistances: AME 0.04, ALE 0.05, PME 0.04, PLE 0.04; AME-AME 0.02, AME-ALE 0.01, PME-PME 0.04, PME-PLE 0.03, ALE-PLE 0.04; MOQ length 0.21, front width 0.20,

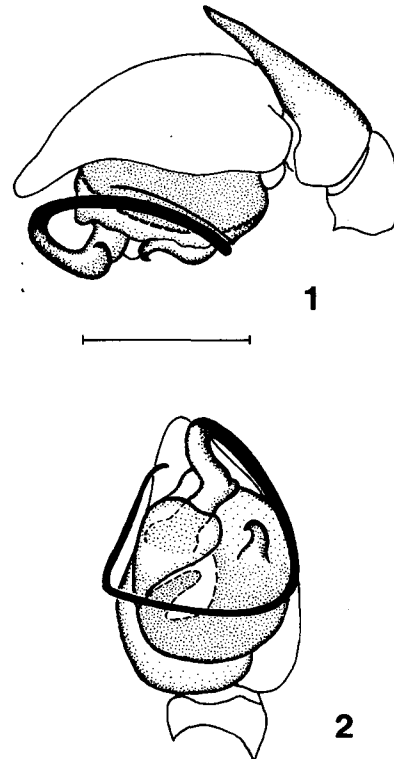
back width 0.23. Embolus very long, tibial apophysis long, dorsally situated (Figs. 1-2). Leg spination: femora I-IV d 1-0-1, I-III p 0-0-1; tibiae I-IV d 0-0-1, IV r 0-1-1, I v 1-1-1, II v 1-1-2, III v 1-0-2, IV v 1-1-2; metatarsi I-IV v 0-0-2.

**Material examined:** Only the holotype.

**Distribution:** Colombia.

**Reference**

PLATNICK, N. I. 1975: A revision of the spider genus *Eilica* (Araneae, Gnaphosidae). *Am. Mus. Novit.* **2578**: 1-19.



Figs. 1-2: *Eilica bonda* n.sp. **1** Palp, retrolateral view; **2** Palp, ventral view. Scale line: 0.2 mm.